

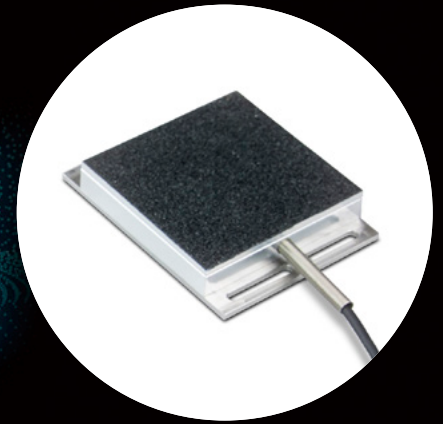
Application

Brake pedal force measurement

Feature

Thin & Lightweight

Built-to-Order



Specifications

Type	Compression Load Cell		
Model	TC-PF2(T)□□N/KN-G		
Rated Capacity (R.C.)	500N	1kN	2kN
Safe overload rating	150% R.C.		
Rated Output (R.O.)	approx. 1mV/V (2000 x 10 ⁻⁶ strain)		
Linearity	0.3% R.O.		
Hysteresis	0.3% R.O.		
Repeatability	0.2% R.O.		
Safe Excitation Voltage	AC. DC. 8V		
Input Terminal Resistance	700Ω ±5%		
Output Terminal Resistance	700Ω ±5%		
Insulation Resistance	1000MΩ or more (50V DC)		
Compensated Temperature Range	0°C to 50°C (no condensation)		
Permissible Temperature Range	-10°C to 70°C (no condensation)		
Temperature Effect on Zero Balance	0.5% R.O. / 10°C		
Temperature Effect on Output	0.5% R.C. / 10°C		
TEDS	Built-in NDI7J connector (PRC03-12A-10-7M)		
Cable	Φ3mm, 6-core robot cable, 3m direct connection with NDI7P on the tip		
Included Accessories	Velcro tape x 2 pcs.		

TEDS

(Embedded in the tip of the cable)

RoHS

(10 substances)

Dimensional drawings (Units: mm)

Notice: Please use appropriate jigs that keeps the bottom plate of the TC-PF2 and a pedal contact each other evenly, and fix to the TC-PF2 with four M3 screws.
This product is NOT water-resistant.
For more detail, please visit <https://loadcell.jp/en/products/loadcell/tc-pf.html>

Related Product

Portable Digital Indicator
TD-01 Portable

Weighs only 320g
(incl. batteries)



On-site checking tool

For easy on-site verification
with the TD-01 Portable.

Bar-meter display for better visibility



TEAC CORPORATION

1-47 Ochiai, Tama-shi, Tokyo
206-8530, Japan

E-mail: cs_ipd@teac.jp

Web: <https://loadcell.jp/en/>

TEAC America, Inc.,

E-mail: datarecorder@teac.com

TEAC EUROPE GmbH.

E-mail: info@teac.eu

TEAC SALES & TRADING (ShenZhen) CO., LTD.

E-mail: teacservice3@teac.com.cn